



**MOMENTIVE**  
performance materials

# Softouch\* CC6059 Boron Nitride Powder

## Product Description

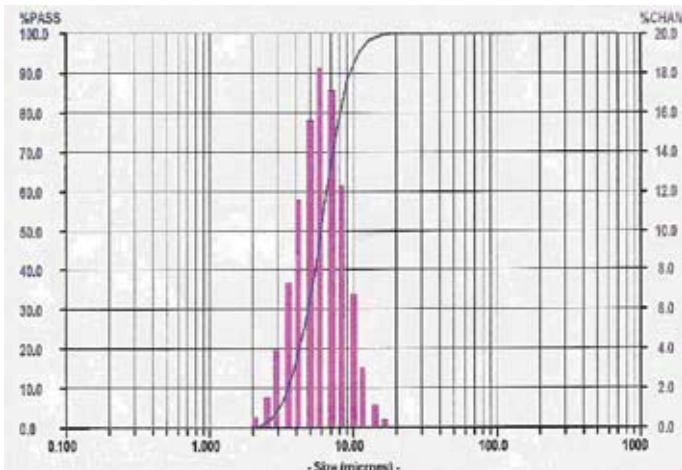
### Softouch CC6059 Powder

Softouch CC6059 powder is a very fine cosmetic grade of boron nitride (BN) powder with good opacity. It can impart a silky, smooth, lubricious feel to cosmetic formulations, while enhancing spreading characteristics and providing extended wear.

## Typical Physical Properties of Softouch CC6059 Powder<sup>(1)</sup>

Crystal	Hexagonal
Color	White
Odor	None
Mean Particle Size (Microns)	6
B+N (%)	≥99
O <sub>2</sub> (%)	0.3
As (ppm)	<1
Pb (ppm)	<1
Hg (ppm)	<1
Sol. Borates (%)	0.03
Surface Area (m <sup>2</sup> /g)	8.5
Tap Density (g/cm <sup>3</sup> )	0.38 (31.2 lb/ft <sup>3</sup> )
Oil Absorption (ASTM D-1483-95)	140

(1) Actual properties may vary. Numbers represent typical data and will vary within ranges established for a particular grade. Please contact your sales representative for specifications.



Momentive Performance Materials provides versatile materials as the starting point for our creative approach to ideas that help enable new developments across hundreds of industrial and consumer applications. We are helping customers

solve product, process, and performance problems; our silanes, fluids, elastomers, sealants, resins, adhesives, urethane additives, and other specialty products are delivering innovation in everything from car engines to biomedical devices.

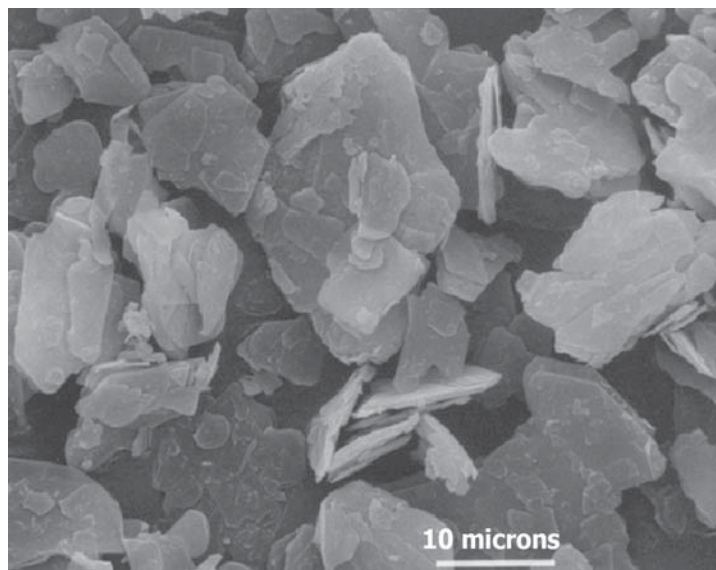
From helping to develop safer tires and keeping electronics cooler, to improving the feel of lipstick and ensuring the reliability of adhesives, our technologies and enabling solutions are at the frontline of innovation.

# Softouch\* CC6059 Boron Nitride Powder

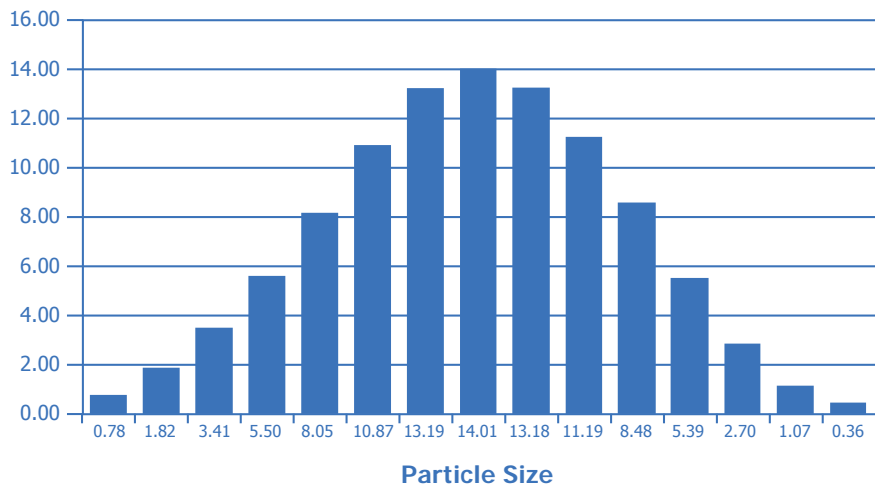
## Potential Applications and Uses

Softouch CC6059 powder may be considered for use in a variety of cosmetic applications. Potential uses include:

- Facial Powder
- Foundations
- Lipsticks
- Skin Care



Softouch CC6059



## Patent Status

One or more US patents pending.

Nothing contained herein shall be construed to imply the nonexistence of any relevant patents or to constitute the permission, inducement or recommendation to practice any invention covered by any patent, without authority from the owner of the patent.

## Product Safety, Handling and Storage

Customers considering the use of this product should review the latest Material Safety Data Sheet and label for product safety information, handling instructions, personal protective equipment if necessary, and any special storage conditions required. Material Safety Data Sheets are available at [www.momentive.com](http://www.momentive.com) or, upon request, from any Momentive Performance Materials representative. Use of other materials in conjunction with Momentive Performance Materials products (for example, primers) may require additional precautions. Please review and follow the safety information provided by the manufacturer of such other materials.

## Limitations

Customers must evaluate Momentive Performance Materials products and make their own determination as to fitness of use in their particular applications.

## Emergency Service

---

Momentive Performance Materials maintains an around-the-clock emergency service for its products. The American Chemistry Council (CHEMTREC), Transport Canada (CANUTEC), and the Chemical Emergency Agency Service also maintain an around-the-clock emergency service for all chemical products:

Location	Momentive Performance Materials Products	All Chemical Products
Mainland U.S., Puerto Rico	518.233.2500	CHEMTREC: 800.424.9300
Alaska, Hawaii	518.233.2500	CHEMTREC: 800.424.9300
Canada	518.233.2500	CANUTEC: 613.996.6666 (collect) or CHEMTREC: 800.424.9300
Europe, Middle East, Africa	+32.(0)14.58.45.45 (Belgium)	CHEMTREC: +1-703.527.3887 (collect)
Latin America, Asia/Pacific, all other locations worldwide	+518.233.2500	CHEMTREC: +1-703.527.3887 (collect)
At sea	Radio U.S. Coast Guard, which can directly contact Momentive Performance Materials at 518.233.2500 or CHEMTREC at 800.424.9300.	

---

DO NOT WAIT. Phone if in doubt. You will be referred to a specialist for advice.

## CUSTOMER SERVICE CENTERS

---

### North America

E cs-na.silicones@momentive.com

• Specialty Fluids	T +1.800.523.5862	F +1.304.746.1654
• UA, Silanes, Resins and Specialties	T +1.800.334.4674	F +1.304.746.1623
• RTV Products-Elastomers	T +1.800.332.3390	F +1.304.746.1623
• Sealants and Adhesives & Construction	T +1.877.943.7325	F +1.304.746.1654

---

### Latin America

E cs-la.silicones@momentive.com

• Argentina & Chile	T +54.11.4862.9544	F +54.11.4862.9544
• Brazil	T +55.11.4534.9650	F +55.11.4534.9660
• Mexico & Central America	T +52.55.5899.5135	F +52.55.5899.5138
• Venezuela, Ecuador, Peru Colombia & Caribbean	T +58.212.285.2149	F +58.212.285.2149

---

### Europe, Middle East, Africa and India

E cs-eur.silicones@momentive.com

T +00.800.4321.1000  
T +31.164.225350

---

### Pacific

E cs-ap.silicones@momentive.com

T +0120.975.400 F +81.276.31.6259  
T +0.81.276.20.6182

---

### Worldwide Hotline

T +1.607.786.8131 F +1.607.786.8309  
T +1.800.295.2392

---

Visit us at [Momentive.com](http://Momentive.com)

---

THE MATERIALS, PRODUCTS AND SERVICES OF MOMENTIVE PERFORMANCE MATERIALS INC., MOMENTIVE PERFORMANCE MATERIALS USA INC., MOMENTIVE PERFORMANCE MATERIALS ASIA PACIFIC PTE. LTD., MOMENTIVE PERFORMANCE MATERIALS WORLDWIDE INC., MOMENTIVE PERFORMANCE MATERIALS GmbH, MOMENTIVE PERFORMANCE MATERIALS SUISSE Sarl, THEIR SUBSIDIARIES AND AFFILIATES DOING BUSINESS IN LOCAL JURISDICTIONS (collectively "SUPPLIERS"), ARE SOLD BY THE RESPECTIVE LEGAL ENTITY OF THE SUPPLIER SUBJECT TO SUPPLIERS' STANDARD CONDITIONS OF SALE, WHICH ARE INCLUDED IN THE APPLICABLE DISTRIBUTOR OR OTHER SALES AGREEMENT, PRINTED ON THE BACK OF ORDER ACKNOWLEDGMENTS AND INVOICES, AND AVAILABLE UPON REQUEST. ALTHOUGH ANY INFORMATION, RECOMMENDATIONS, OR ADVICE CONTAINED HEREIN IS GIVEN IN GOOD FAITH, SUPPLIERS MAKE NO WARRANTY OR GUARANTEE, EXPRESS OR IMPLIED, (i) THAT THE RESULTS DESCRIBED HEREIN WILL BE OBTAINED UNDER END-USE CONDITIONS, OR (ii) AS TO THE EFFECTIVENESS OR SAFETY OF ANY DESIGN INCORPORATING SUPPLIERS' PRODUCTS, MATERIALS, SERVICES, RECOMMENDATIONS OR ADVICE. AFOREMENTIONED EXCLUSIONS OR LIMITATION OF LIABILITY ARE NOT APPLICABLE TO THE EXTENT THAT THE END-USE CONDITIONS AND/OR INCORPORATION CONDITIONS CORRESPOND TO THE RECOMMENDED CONDITIONS OF USE AND/OR OF INCORPORATION AS DESCRIBED BY SUPPLIER IN ITS PRODUCT DATA SHEET AND/OR PRODUCT SPECIFICATIONS. EXCEPT AS PROVIDED IN SUPPLIERS' STANDARD CONDITIONS OF SALE, SUPPLIERS AND THEIR REPRESENTATIVES SHALL IN NO EVENT BE RESPONSIBLE FOR ANY LOSS RESULTING FROM ANY USE OF ITS MATERIALS, PRODUCTS OR SERVICES DESCRIBED HEREIN.

Each user bears full responsibility for making its own determination as to the suitability of Suppliers' materials, services, recommendations, or advice for its own particular use. Each user must identify and perform all tests and analyses necessary to assure that its finished parts incorporating Suppliers' products, materials, or services will be safe and suitable for use under end-use conditions. Nothing in this or any other document, nor any oral recommendation or advice, shall be deemed to alter, vary, supersede, or waive any provision of Suppliers' Standard Conditions of Sale or this Disclaimer, unless any such modification is specifically agreed to in a writing signed by Suppliers. No statement contained herein concerning a possible or suggested use of any material, product, service or design is intended, or should be construed, to grant any license under any patent or other intellectual property right of Suppliers or any of its subsidiaries or affiliates covering such use or design, or as a recommendation for the use of such material, product, service or design in the infringement of any patent or other intellectual property right.